

100
20

®
RIK

ROTARY EVAPORATORS

the best evaporating solutions



STRIKE® 20

STRIKE®20 is a 20L rotary evaporator designed for industrial systems and R&D purposes.

It meets all the process needs using 3.3 borosilicate glass and PTFE allowing aggressive substances treatment.

It works efficiently both under vacuum and at any ambient conditions. The rotation of the 6, 10 or 20L evaporation flasks inside the heating bath results in a forced convection and homogenous distribution of the product, preventing sedimentation while ensuring high evaporation exchange surface.

The sealing system guarantees perfect vacuum tightness and no maintenance.

Glassware can be customized to meet any client specific need.



STRIKE® 100

STRIKE®100 is a large capacity rotary evaporator designed for industrial plants. It meets all the process needs by using borosilicate glass and PTFE permitting aggressive substances treatment.

It works efficiently both under vacuum or at any ambient conditions. The rotation of the 50 or 100 L evaporation flask in the heating bath results in a forced convection and homogenous distribution of the product, thus preventing sedimentation.

In addition, STRIKE®100 ensures high evaporating exchange surface.

The sealing system guarantees perfect vacuum tightness and maintenance free operation. Glassware can be customized to meet any client specific need.



50 L
or 100 L
EVAPORATION
VESSEL

1.43 m²
EXCHANGE
SURFACE

18 L/hour
RECOVERY
CAPACITY
(ETHANOL 96%)



TOTAL SAFETY SYSTEM

STRIKE® 20 and STRIKE® 100 industrial safety rotary evaporators protect the user from any risk during work.

The heating bath (standard for Strike 100 and optional for Strike 20) is covered with a transparent shield providing the operator with utmost protection from glass breaking and spray at high temperature. It is lifted by means of a hydraulic system which, in case of power failure or doors opening, goes down automatically to prevent fluid overheating and the process will immediately stop.

A rupture disk protects from any risk of glassware breakage in case of accidental overpressure or malfunctioning.

Electric heater enhanced to 8Kw ensures continuous evaporation of the product even in the worst conditions.



MAINTENANCE-FREE VACUUM SEALING

Both STRIKE® 20's and STRIKE® 100's sealing systems are made of self lubricating material allowing perfect vacuum tightness. The sealing system does not require any maintenance during the instrument's life. No gaskets, o-rings or consumables needed.



CONDENSER

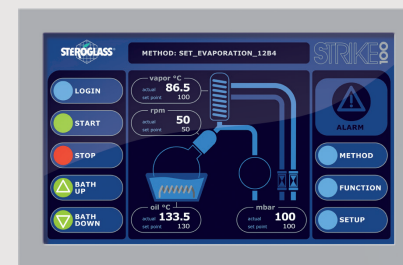
The condenser ensures the largest exchange surface in order to obtain the best condensation as well as speed and recovery rates with very high performances.

Optional: glass and stainless steel condenser for a very fast recovery in ethanol applications.



USER-FRIENDLY DISPLAY

STRIKE® 20 and STRIKE® 100 are equipped with a 7" touch-screen display and a anti-reflection coating glass panel. STRIKE® 100 ATEX version is supplied with a PLC display and an industrial panel.



PLC PROGRAMMABLE LOGIC CONTROLLER



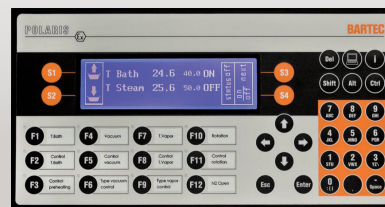
STRIKE® 100 ATEX is fully controlled by a PLC (Programmable Logic Controller) which allows for controlling the parameters as well as setting them directly by means of the keys.

User can acquire, on an external PC through serial communication, all the process parameters.

The following process operating conditions can be set and displayed:

- Bath temperature
- Rotation speed
- Vapour temperature
- Vacuum level

Any value error or anomalous temperature will block the electric power for safety reasons



BENEFITS



APPLICATIONS

Distillation and extraction at low temperature
(continuous/batch)
Solvent recycling
Reflux process reactions
Component drying
Fine chemical synthesis
Crystallization
Purifications
R&D studies
Scale-up



CHEMICAL & PHARMACEUTICAL

The most efficient rotary evaporator
to work in compliance with GMP and FDA regulations



HERBS

The ideal solution for extraction and evaporation of officinal plants,
medicinal plants (Cannabis)

The fastest way for ethanol removal and / or recycling

APPLICATIONS & TARGETS



COSMETICS & PHYTOTHERAPY

Utmost quality production thanks to gentle and natural extraction

Best ethanol recovery and purification guaranteed



LUXURY SPIRITS

High quality production

Gently and natural extraction: low temperature combined with vacuum preserve all the aromatic properties of the botanics



FOOD-AROMA

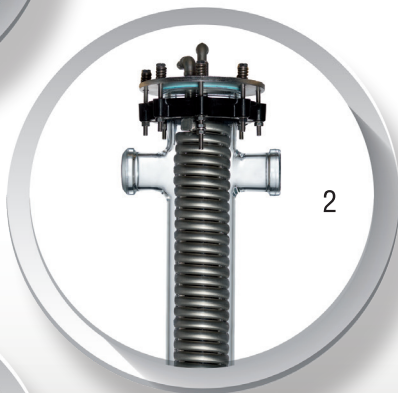
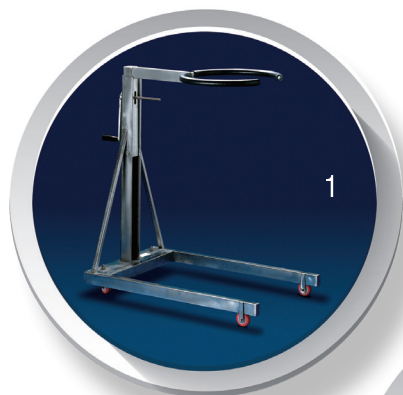
The ideal solution for extraction of hydrolates / flavoured waters made of essential oils, preserving all the olfactory, nutraceutical and organoleptic properties of the original product

MAIN ACTIVITES

ACCESSORIES

- 1 Trolley for evaporating flask handling
- 2 Glass/stainless steel condenser for very fast recovery
- 3 Automatic filling

Vacuum pump, chiller and other options available on request



ACCESSORIES

STRIKE®20 TECHNICAL FEATURES

Working range °C	[ambient ... 150]
Accuracy °C	+/- 2
Resolution °C	0.1
Set point	(1°C step)
Type of control	PID
Maximum oscillation during checkout °C	+/- 3
Power resistor KW	3
Heater power density	≤3W/cm2
Over-temperature protection	YES
Temperature sensor	PT100
Filling level	Manual

Vapour temperature

Working range °C	[ambient ... 150]
Accuracy °C	+/- 2
Resolution °C	0.1
Temperature sensor	PT100

Rotation

Working range Rpm	[10; 150]
Accuracy Rpm	+/- 2
Rotation speed reading	YES
Resolution Rpm	1

Vacuum control

Working range mbar	[8; 999 atmospheric]
Accuracy mbar	±5
Resolution mbar	1
Absolute vacuum reading	YES
Display	Digital
Vacuum setting	[0; 999]

Lift system

On/off	YES
Electric	YES

Interface

Export data	YES
Remote control	YES

Alarms and controls

Heating bath overheating	YES
Bath temperature exceeding set point	YES
Soft start rotation	YES
Rotation speed monitoring	YES
Safety status (rotation, lifting, heating=off)	YES
Evaporation flask protection	YES

Glassware

20 lt evaporation flask	YES
10 lt evaporation flask	YES
6 lt evaporation flask	YES
Collecting flasks: 2x6 lt or 1x10lt	YES
Glassware configuration	Descending, reflux, customized

General features

Cooler exchange surface (mq)	0.5
Over-pressure protection	YES
Protection with rupture disk	YES
Quick closing	YES
Dimensions (WxDxH mm)	1.240x580x2060
Power supply	230Vac mono 3,4 Kw
Weight Kg	150
Vapours cycle maximum temperature	YES
Vapours cycle minimum temperature	YES
Vapours cycle Temp range	YES
Bath lowering in case of alarm	YES

TECHNICAL FEATURES

STRIKE®100 TECHNICAL FEATURES

Thermic Bath

Working Range °C	[ambient; 150]
Accuracy °C	+/- 2
Resolution °C	0.1
Set point	YES (1°C step)
Type of control	PID
Maximum oscillation during checkout °C	+/- 3
Power resistor KW	8
Heater power density	3W/cm2
Over-temperature protection	YES
Temperature Sensor	Three-wire PT100
Level sensor	YES
Filling Level	Yes -Manual

Vapour Temperature

Working Range °C	[ambient; 150]
Accuracy °C	+/- 2
Resolution °C	0.1
Temperature sensor	Three-wire PT100

Rotation

Working Range Rpm	[5; 100]
Accuracy Rpm	+/- 2
Rotation speed reading	YES
Resolution Rpm	1
Engine 0,18KW, 380Vac	YES

Vacuum Control

Working Range mbar	[8; 999 atmospheric]
Accuracy mbar	±5mbar
Resolution mbar	1
Absolute vacuum reading	YES
Display	Digital
Vacuum regulation	YES

Lifting

Lifting control ON/OFF	YES
Hydraulic lifting	YES

Interface

PLC controlled	YES
Export data interface	YES
Remote control interface	YES

Alarms

Thermal bath overheat	YES
Bath temperature exceeding set point	YES
Soft start rotation	YES
Rotation speed monitoring	YES
Security status (rotation, lifting, heating=off)	YES
Evaporation flask protection opening	YES

General

100Lt evaporation flask	YES
50Lt evaporation flask	YES
20L evaporation flask	YES
20Lt collecting flask	2
Cooler exchange surface (mq)	1.43/custom
Over-pressure Protection	YES
Protection with rupture disk	YES
Quick closing	YES
ATEX certification	EPTI 15 ATEX 0181
Dimensions Reflux (WxDxH mm)	900x1.850x2.285
Dimensions Vertical model (WxDxH mm)	900x1.850x2.150
Weight Kg	350-400

Operation

Vapours cycle maximum temperature	YES
Vapours cycle minimum temperature	YES
Vapours cycle Temp range	YES
Lowering bath in case of alarm	YES

Optional

Plastic coated glassware	ON REQUEST
--------------------------	------------



100
20

®
STERIL
GLASS

COMPANY WITH
QUALITY SYSTEM
CERTIFIED BY DNV
ISO 9001



ROTARY EVAPORATORS

the best evaporating solutions

STEROGLOSS s.r.l.
Via Romano di Sopra, 2/C

06132 - S.Martino in Campo
PERUGIA - ITALY

Tel. +39 075 60 90 91
Fax +39 075 60 90 950

[http: www.steroglass.it](http://www.steroglass.it)
e-mail: info@steroglass.it

